



MONTHLY MEMBERSHIP PROGRESS REPORT

Results as of: 5/31/2015

Multiple District 110

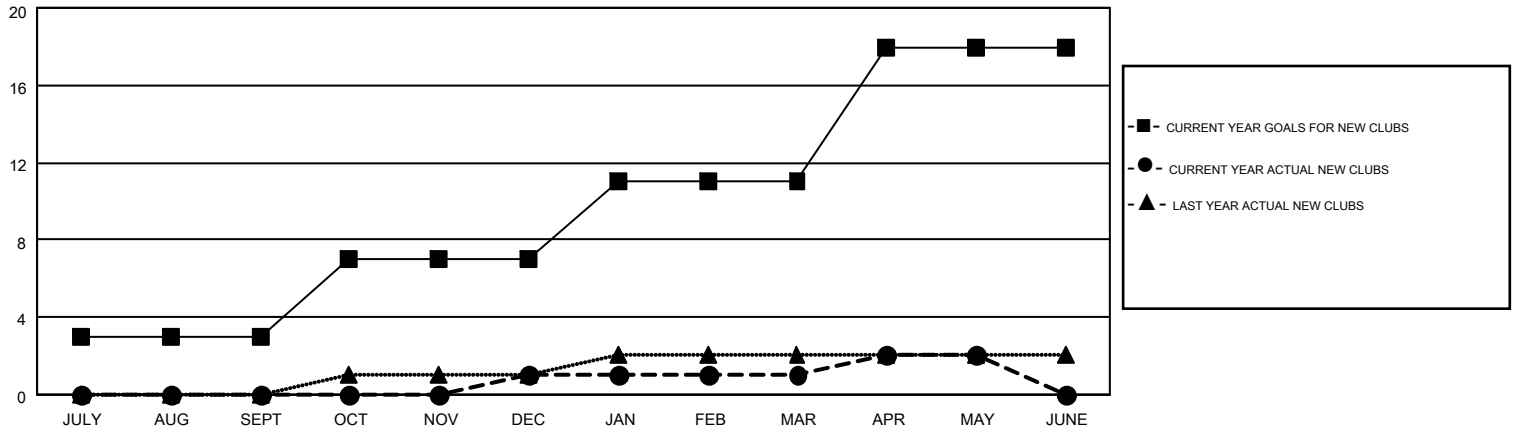
LOCATION: NETHERLANDS

GMT: ELISABETH HADERER

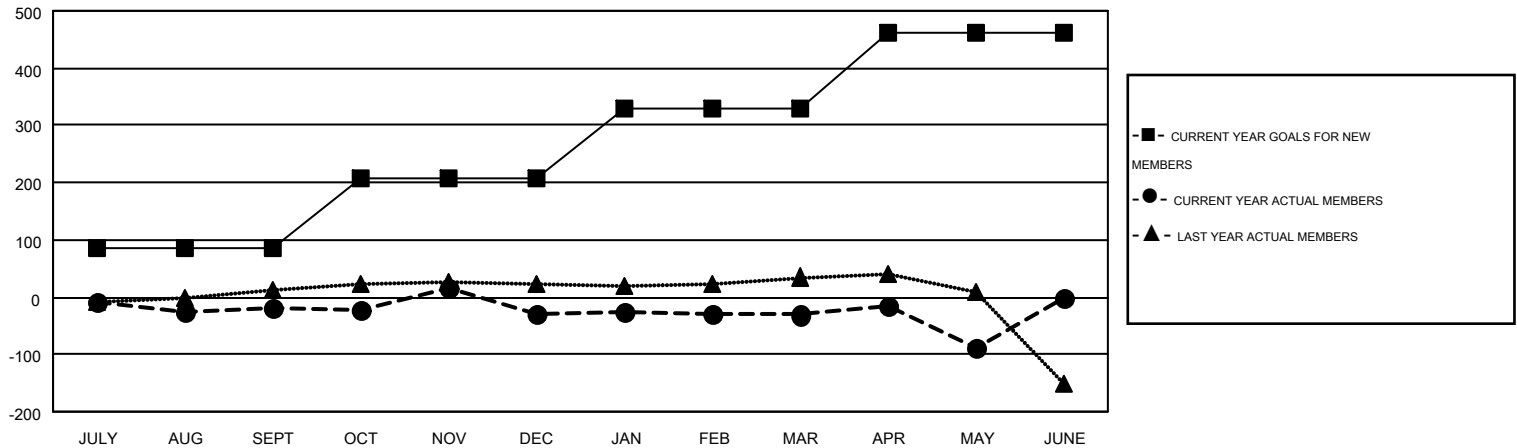
GMT CA 4

Clubs					Members				
RESULTS FOR 2014-2015					RESULTS FOR 2014-2015				
QUARTER	NEW CLUB GOAL	NEW CLUBS	DROPPED CLUBS	NET GAIN/LOSS	QUARTER	NEW MEMBER GOAL	CHARTER AND NEW MEMBERS ADDED	DROPPED MEMBERS	NET GAIN/LOSS
JULY/AUG/SEPT	3	0	0	0	JULY/AUG/SEPT	85	60	79	-19
OCT/NOV/DEC	4	1	0	1	OCT/NOV/DEC	121	184	193	-9
JAN/FEB/MAR	4	0	0	0	JAN/FEB/MAR	124	131	134	-3
APR/MAY/JUNE	7	1	0	1	APR/MAY/JUNE	133	142	199	-57

GOALS AND ACTUAL NEW CLUBS CUMULATIVE



GOALS AND ACTUAL MEMBERS CUMULATIVE



DROPPED CLUBS: 0	238 CLUBS OF 433 ADDED 1 OR MORE NEW MEMBERS	<u>GENDER DISTRIBUTION</u>			
<u>DROPPED MEMBERS</u>		MALE	9,937 (86.27%)		
DECEASED	57	FEMALE	1,582 (13.73%)		
CLUB CANCELLED	21	CLICK HERE FOR HEALTH ASSESSMENT DATA			
OTHER	527			FAMILY UNIT MEMBERS	12
TOTAL	605			HEAD OF HOUSEHOLD	6
		NON-HEAD OF HOUSEHOLD	6		